

Alpha 1800

SPREADER/FEEDER

Dynamic Processing Solutions!

Braun Alpha Spreader/Feeders maximize the productivity of your flatwork area. With fewer moving parts, a cableless spreading mechanism and rugged design and construction, Braun Alphas meet your needs for reliability and repeated high performance. The Alpha's microprocessor ensures precision spreading and feeding, with each piece accurately squared and centered. The lay-down process is carried out at the same speed as the feed belts, and an air assist completes the feed process for the highest quality leading edge. That edge leads directly to a superior finish.

The Alpha Series consistently delivers high quality output for operators with minimal training. Even new workers will quickly realize outstanding results. For reliability, performance and a better finished product, depend on Braun Alpha Series Spreader/Feeders.



WWW.GABRAUN.COM

Braun Alpha 1800

Easy to Operate. High Quality Output. Consistent Performance!

Fact

There are numerous claims on spreader/feeder operations and product performance in the marketplace today. But if you are looking for consistent performance and high quality output you simply **cannot “toss”** sheets onto a spreader/feeder and expect a crisp straight leading edge to produce the results that you and your customers deserve and expect!

How we do it and why we do it

Braun has incorporated the latest in technology utilizing an auto feed mechanism and transfer system that leverages optical sensors to improve ergonomics, cycle speeds and feed quality. Our automatic leading edge and width sensing system allows for a seamless transition between products of various sizes on the fly. This is ideal for those plants that process mixed items in a single lane. It also relieves the stress / tension that is created by spreading the products at high speed. This stress relief capability assures a smooth transfer from the spread mechanism to the feed table. It also assures a quality leading edge is achieved. This approach, as opposed to other designs, leverages consistent mechanical and electronic technology as opposed to the inconsistent application of air pipes, nozzles and jets to provide a straight and flat leading edge post spreading.

The Braun Alpha 1800 leads the industry in high volume processing with exceptional product quality results. Equipped with four feed stations and a dual spread deck, the Alpha 1800 can overlap flatwork at speeds of up to 180 FPM under the precise control of the Braun Microprocessor.

Small pieces can be fed directly into a flatwork ironer by means of a conveyor that automatically rises to a convenient working height when activated by selecting a pre-set program. The feeding portion of the spreader/feeder remains in the original position for operator ease of use and comfort. For small piece feeding Braun offers an optional vacuum deck feature.

All Braun Alpha series spreader/feeders require minimal operator training.

Standard Features

- Bilingual control display (English/Spanish)
- Caster mounted for easy movement
- 24V DC solid state circuitry with troubleshooting capability
- Digital, re-settable production counters for each feed station
- 120" working width
- Ergonomic feed design (45 degree tilt)
- Programmable inverter conveyor drive with digital speed indicator
- Memory card for program back up
- Ethernet ready
- Wired for, and easily adaptable to, the Braun ARC (automatic reject computer) quality control unit.
- Illuminated E-stop
- Integrated photo-eye for material detection
- Feed transfer release buttons for each station
- Leading edge accelerator
- Visibility of feeding, spreading and lay-down

- Transfer device between feeder out-feed table and ironer in-feed table
- Spread tension control or tautness detection
- Spread tension release
- Multi-axis control: feed forward-back, clamp open-close tension release

Optional Features

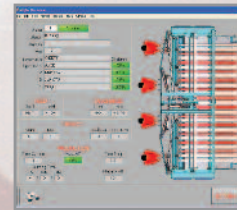
- Discharge table canopy
- Red, green and yellow production status indicator lights
- Lighted small piece feed deck
- WASHNET® (for Braun equipped finishing lines)
- Vacuum deck for small piece feeding
- Discharge table option of 120" or 130"



Flashcard for easy Downloading of PLC Formulas.



Spanish/English Bilingual Screen Displays



WASHNET® Data Management Tool.

Specifications

Type	Model Number	No. Feed Stations	Shipping Weight	Shipping Dimensions
Alpha 1800	TP4SSF	4	5,250 lbs	162" (l) x 96" (w) x 102" (h) 4115mm (l) x 2438mm (w) x 2590mm (h)

Note: Specifications subject to change without notice



ISO 9001:2000 CERTIFIED

G. A. Braun, Inc.

79 General Irwin Boulevard
P.O. Box 3029
Syracuse, NY 13220-3029
1-800-ID BRAUN
(1-800-432-7286)
(315) 475-3123
Fax (315) 475-4130

Parts Help Desk
1-800-432-7286 X 1
Service Help Desk
1-800-432-7286 X 2



10/10

Care about quality? Don't just toss your linens to chance.

Choose Braun's **proven** dynamic processing solutions for consistent performance and high quality output.

Simply better results.

Braun Flatwork Finishing Systems have been revolutionizing the industry. Increased productivity and profitability are just part of the story.

Many solutions offered today on the market are one-dimensional and are focused on processing only a portion of the total products that go down the ironing line. Braun's focus is, and has been, on providing capable and durable solutions that can handle the array of thread counts, material types and mix of products to be processed.

By providing our clients with **dynamic solutions**, we can help them reduce their full-time employee needs, and reduce their carbon footprint as it pertains to the number of machines needed in the finishing area and reduce their energy requirements.

Simplified electronics allow for ease of support and maintenance, which translates into more efficiency for your plant.

With reliable solutions for hospitality, healthcare, commercial linen supply and industrial laundries, G.A. Braun's finishing equipment is simply the smart choice.

Support:

- Easy access to replacement parts (domestically sourced and supplied)
- Regionally located, factory trained Braun field service technicians
- **FREE** 24/7 telephone technical support help desk for the life of the equipment!
- Remote access to the PLC via Washnet®.

All Braun products are manufactured in the U.S.A.

Energy efficiency from wash to finish.



Delta Flatwork Ironers



Omega Folder/Cross-Folder



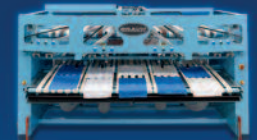
Sigma Small Piece Folders



Theta Blanket and Knit Sheet Folders

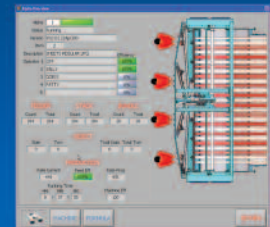


Small-Piece Accumulators



Alpha Series Spreader/Feeders

WASHNET® Data Management and Decision Support Software



The screen shown above tracks critical data, including productivity by individual operators and reject rates.

“ Our customers are hospitals who are concerned about quality processing, infection control and how we deliver their product. Braun equipment helps us meet all those requirements. It is efficient, durable, and extremely versatile! We can go from running fitted sheets to patient gowns with just the push of a couple of buttons. **The end result: Products that are truly of the highest quality.** ”

Max Blaufuss
President/CEO
Lake Superior Laundry

